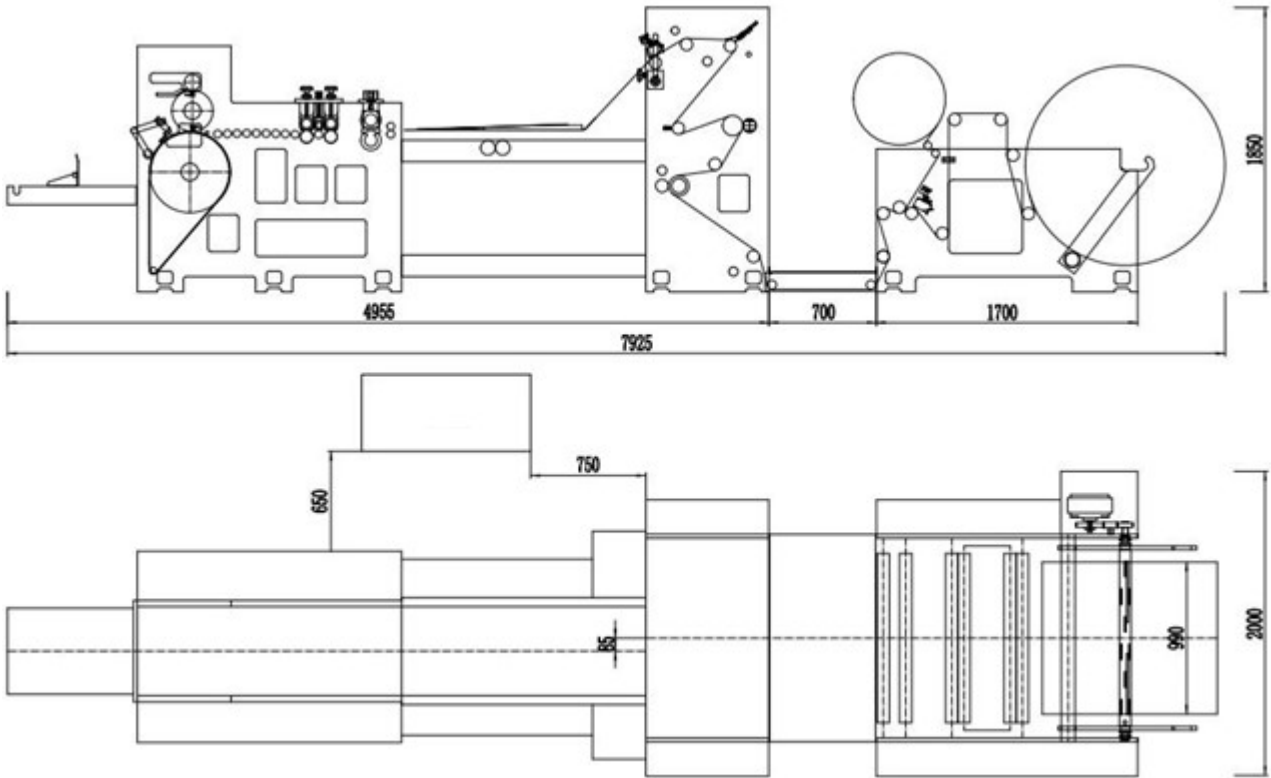


## SM PB-C330 paper bag making machine



Layout size:7950\*2000\*1850

## QUOTATION

<b>Exporter/Seller:</b>		DATE:02.02.2024			
SURAPACK AMBALAJ SANAYI VE DIS TICARET ANONIM SIRKETI DUDULLU OSB MAH. MAH. DES 101 ISTANBUL - TURKIYE		<b>EXPORTER'S LC ADVISING BANK NAME &amp; ADDRESS:</b> NAME OF BANK: KUVEYT TURK KATILIM BANKASI A.S. ISTANBUL TR ADDRESS: Alemdağ Cad., No:602/A Tepeustu, Umraniye/ ISTANBUL. Swift BIC: KTEFTRISXXX BENEFICIARY'S NAME: SURAPACK AMBALAJ SAN. VE DIŞ TIC. A.Ş ADDRESS: DUDULLU OSB MAH. MAH. DES 101 ISTANBUL - TURKIYE. USD IBAN.: TR620020500009830124300101			
<b>Importer/Buyer:</b>					
<b>Ship Via</b>		<b>Port of Loading</b>	<b>Country of Origin:</b>		
By sea		NINGBO CHINA	CHINA		
<b>Port of discharge</b>		<b>Place of delivery</b>	<b>Terms of Delivery and Payment</b>		
			TT		
<b>Shipping mark</b>	<b>ITEM</b>	<b>Description of Goods</b>	<b>QTY inUnit</b>	<b>UNIT</b>	<b>TOTAL AMOUNT</b>
N/M	1	SM PB-C330 paper bag making machine	1		
<b>TOTAL AMOUNT</b>					
<b>Amount in words:</b> TOTAL SAY USD ONLY.					
<ol style="list-style-type: none"> <li>1. Term of payment: 50% as deposit,50% before delivery.</li> <li>2. Time of shipment: within 60 workdays after confirm the advance payment,50% before delivery.</li> <li>3. Trade terms: FOB NINGBO</li> <li>4. Port of loading: NINGBO CHINA</li> <li>5. Port of Destination:</li> <li>6. Insurance: To effected by buyer</li> <li>7. Partial Shipment: ALLOWED                      Transshipment: ALLOWED</li> <li>8. Warranty: 1Year, but not including damages due to misuse and unauthorized modification of hardware and force majeure.</li> <li>9. The buyer should cover engineer's around-tickets, hotel &amp; food, and salary etc .</li> <li>10. Force Majority: Should any circumstance arise which prevent complete or partial fulfillment by any of the parties of their respective obligations under present contract, namely: fire,natural calamities,war, blockade,</li> </ol>					

## 1.1 TECHNICAL DESCRIPTION

This machine forming the paper bag in one process from roll paper, edge folding, tube forming, cutting, gluing, bottom folding, bottom gluing and finishing bag. Easy operation, low power consumption, high efficiency. It is an ideal machine for producing food bags like bread bags, KFC bags and McDonald's bags.

## 1.2 SAMPLE BAGS



### BAG SUITABLE:

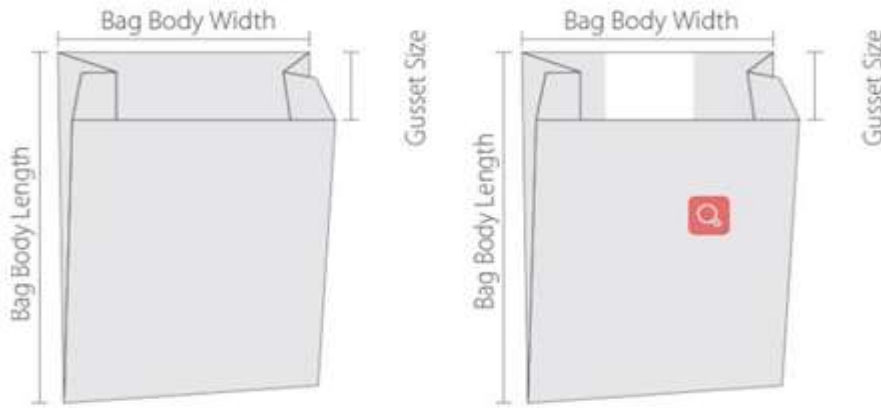
Food bag: leisure food bag, baking bag, nuts fried bag, subsidiary food bag, fruit bag, baby products bag, etc.

## 1.3 PRODCUTION RANGE DESCRIPTION

MODEL	New world -C330
Paper Thickness Range	30-100GSM
Paper Bag Width Range	80-330mm
Paper Bag Length Range	120-720mm
Side Folding Range	0-50mm
Production Precision	±0.2mm
Machinery Speed	150-500 pcs /min
Maximum paper roll Width	1000mm
Maximum Paper roll Diameter	1200mm

Total Power	380V 3 Phase 16kw
Machine Weight	5500kg
Machine size	7950×2000×1850 mm

## 1.4 BOTTOM FOLDING METHOD



## 1.5 DESCRIPTION AND CONFIGURATION OF MAIN STRUCTURE AND FUNCTION

1. This machine adopts touch screen man-machine interface, regardless of correction, trimming can be arbitrarily set, alarm and operation state displayed on screen, easy to operate. The operation interface, English can be switched with each other.
2. With a touch screen and man-machine interface using the German import PC programmable control system, real-time working status display.
3. Set the original French servo motor control with long motor, is making more stable.
4. Printing color tracking system, using the German color photoelectric tracking precision, with automatic calibration function.
5. Photoelectric sensor limiting automatic control system, speed correction roll on saving the machine adjusting time and reduce waste.
6. Magnetic powder tension control with automatic constant tension control system, automatic calculation of roll diameter to achieve constant tension control
7. Material handling with pneumatic lifting structure combination, can save manpower and reduce the loading and unloading time.

8.This machine adopts Germany original electrical system, to ensure the machine more stable.  
 9.Safety protection design of the machine has a new humanity; full face cover design, fully guarantee the safety and product operator environment.

Name	QTY	Original/Brand
PLC	1	SCHNEIDER
Touch screen	1	SCHNEIDER
Pre-cutting Servo motor	1	SCHNEIDER
Traction Servo motor	1	SCHNEIDER
pressing Servo motor	1	SCHNEIDER
breaking Servo motor	1	SCHNEIDER
Big drum Servo motor	1	SCHNEIDER
Sealing servo motor	1	SCHNEIDER
Color mark tracking photo-sensor	1	Germany SICK
Edge control system	1	Arise
Magnetic powder brake	1	Zhejiang
Cylinder	2	Zhejiang
Forming plate	1	As per customer required
Low-voltage apparatus	1	SCHNEIDER
Bearing		HeNan
Hot melt Machine	1	ROBATECH





## 1.6 SPARE PART

No.	Name	Size	Qty	Remark
1	Cutting blade	500×14.5×0.3	6 pcs.	puncture
2	Cutting blade block	140、200、290、325	EACH 2 PCS	PRE CUTTING
3	Circular Cutter	19×15.32×0.3	8 pcs.	puncture
4	Single Tooth Timing Belt	8M×1152×40	2 pcs.	puncture +bottom fold
5	Single Tooth Timing Belt	8M×960×40	2 pcs.	Traction +press paper
6	Single Tooth Timing Belt	8M×1920×50	2 pcs.	Traction
7	Single Tooth Timing Belt	8M×1080×40	1 pcs.	Mainly Traction
8	Single Tooth Timing Belt	8M×912×40	1 pcs.	Snap
9	Single Tooth Timing Belt	8M×1056×50	1 pcs.	Mainly Traction
10	Single Tooth Timing Belt	8M×1456×50	1 pcs.	Hub
11	Single Tooth Timing Belt	5M×390×20	1 pcs.	Bottom glue
12	Single Tooth Timing Belt	5M×1100×30	1 pcs.	Feeding
13	Single Tooth Timing Belt	5M×2650×30	1 pcs.	Feeding
14	Single Tooth Timing Belt	5M×490×30	1 pcs.	Assist feeding
15	Flat Belt	28×1.5×10000	1 pcs.	Inside feeding
16	Flat Belt	28×2×8000	1 pcs.	Broad feeding
17	Round feeding belt	Φ5×10000	1 pcs.	Big drum feeding

18	Forming plate	140、200、290	Each 1 set	As per customer required
19	Plate block	Height 20、30	Each 1pc	Forming
20	Big drum presser	340×26.5×1.2	4 pcs.	Material: SK2 carbon tool steel δ1.2
21	Bottom fold cutter	340×33×1	2 pcs.	Material: spring blade
				δ1
22	Bottom gluer	340×30×3	2 pcs.	Aluminum profiles 30 × 3
23	Snap block	340×24.4×12	4 pcs.	Red rubber
24	Bottom glue side block	Nylon	2 pcs.	Bottom glue
25	Feeding roller	Rubber	4 pcs.	Forming
26	Hot machine		1 pcs.	
27	belt glue		1bottle	
28	Toolkit		1 ↑ 1 pcs.	a set of accessorial tools
29	screws and springs		some	Based on the equipment

# Contact Information



+90 552 442 33 07



[info@suramachine.com](mailto:info@suramachine.com)



[www.suramachine.com](http://www.suramachine.com) [www.surapack.com](http://www.surapack.com)

Dudullu OSB District, DES Sanayi Sitesi, 101. Sokak No 8/10, 34775 Ümraniye/İstanbul Turkey



Telefon: +90 216 415 66 55

+90 216 420 47 30

+90 850 305 47 30